



NBPS Newsflash

September 2020

Welcome back Team NBPS!

As we transition from Phase I to Phase II, we continue to balance the various needs and perspectives of all stakeholders. We have been able to work through some unique technology changes and expectations with new programs in addition to troubleshooting to support staff. We anticipated some challenges and remain focused on being proactive and ready to support in any way possible.

We know that effective communication at all levels is a mainstay of successful organizations. In this new reality and unique time, it must be the foremost factor in our work. Each of us must take critical ownership, not only of the messaging we generate, but also with discernment and clarity. We will find ourselves frequently sharing the same message in different ways to students, parents and colleagues. It is critical that we endeavor to ease anxiety and foster confidence as we communicate while conveying our positive culture and supportive climate.

Our message will continue to be delivered in multiple modalities as we work to ensure that information is accurate, timely, and translated into our 4 primary languages. We welcome the varying perspectives and opinions as we focus on our more than 13,000 students (close to 10,000 families) and our almost 2,500 staff members. From across the larger New Bedford community, we receive a considerable number of supportive comments and recommendations on how we can collectively support the academic and social emotional needs of our students.

As we embark on this new school year, one that looks much differently than any before it, let us remember why we began this work. You have a significant impact on the lives of so many; let us make a positive difference; and let us help one another with our blind spots. Please continue to be kind, stay safe, and think of others.

Thank you,

Thomas Anderson
Superintendent

*Unity is strength
— when there is
teamwork and
collaboration,
wonderful
things can be
achieved.*

Mattie Stepanek

INSIDE THIS ISSUE

- Employee Spotlight: 2
- Fall Step Challenge: 3
- MA Seal of Biliteracy: 4
- Ready Classroom: 5
- Lesley Courses: 6

Employee Spotlight

Technology Integration Managers TIMS

New Bedford Public Schools

In this issue, we'd like to shine the spotlight on our Technology Integration Managers, lovingly known as TIMs! TIMs assist teachers at the Middle Schools & High School to enhance learning through improved integration of technology. The primary focus of the Technology Integration Manager is to enrich and support teaching and learning while strengthening the technology skills of students, teachers and staff. They have tirelessly been assisting classroom teachers in the incorporation of technological hardware and software into lesson plans. TIMs collaborate with the technology support team, as they support the school improvement efforts and build the technology instructional capacity of the administration and teachers. Their extensive knowledge, experience and successful implementation of instructional technology is remarkable!

Kimberly McCorckle was a classroom teacher for 12 years and has a passion for integrating technology in instruction. "It is my great pleasure and honor to share what I have learned with the talented and hard-working staff at Keith Middle School. I still love the "Aha" moments when someone makes a connection or something I share sparks a new idea!"



Timothy Healey supports the technology and staff at Roosevelt Middle School. "I specifically support the teachers and technology in the classrooms. I like helping people with their technology problems because this is very rewarding."

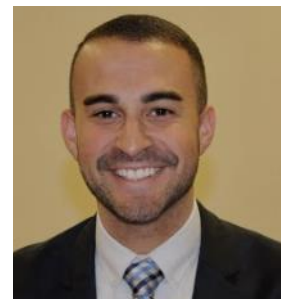
Nancy Yancey says that she is in her dream job supporting Normandin Middle School! "Every day I get to provide immediate, on-the-spot assistance to teachers and students as they encounter troubles along the digital highway. I am the support staff that I always wished existed in my building when I was a high school math teacher."



Amanda Cenerizio has worked in Technology Services for the District since 2016. She has been a trusted TIM at New Bedford High School for the past two years! "I love my job because I get to see how much teachers have grown with technology and have become empowered to try things out and create new ways to bring lessons to students through tech. One of my favorite parts is when a teacher comes to me with a tech problem - something they are trying to figure out for their class lessons - I help them through it, and then they come back excited to show me what they learned, how they have implemented it in their class, and how much more comfortable they are

to explore new things."

Joseph Perry is our newest TIM, supporting technology at the high school. "To be able to empower a staff member or student with their technology is the most fulfilling feeling for me."



ENROLL NOW!
Enrollment ends 9/20

YOU'RE INVITED!

JOIN OUR ANNUAL
FALL STEP CHALLENGE!



Challenge Enrollment period: September 7, 2020 to September 20, 2020.

The Fall Step Challenge will begin September 14, 2020 and will end on October 26, 2020 at 11:59pm.

Only employees who subscribe to our BCBS health insurance are able to participate.



Step challenge instructions are available on the district website: [HERE!](#)

ahealthyme
Everything to live a healthier life



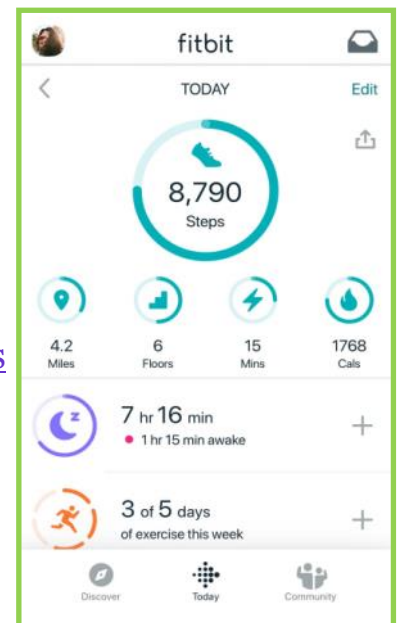
Everything to live
a healthier life.

To successfully complete this challenge, you will need to log 294,000 steps within 6 weeks, an average of 7,000 steps a day, using a pedometer, **Fitbit**® or other device to keep track of steps. Steps must be entered into **ahealthyme**, either on the website, through the **HealthyNow app**, or through a connected **Fitbit**® device, to be counted toward the challenge goal.

Fitbits will be available to all employees and spouses who have not received one in the past challenges. Water bottles and Gym bags are also available to all participants while supplies last!

Employees who complete the challenge will be eligible to receive a \$40.00 gift certificate. [Gift certificates will be issued to employees only.](#)

If you have any further questions, please contact our Benefits Administrator, [Marcia Tome.](#)





Massachusetts Seal of Biliteracy



The State Seal of Biliteracy is an award provided by state approved districts that recognizes high school graduates who attain high functional and academic levels of proficiency in English and a world language, in recognition of having studied and attained proficiency in two or more languages by high school graduation.

To qualify, students must meet all graduation requirements, along with the English language and foreign language criteria found in [603 CMR 31.07\(2\)](#) of state regulations. Criteria are set for students whose first language is English who are learning a second language, and for English Learners who are developing academic proficiency in their home language while learning English. Students who demonstrate mastery of English and a foreign language may be eligible for the State Seal of Biliteracy with Distinction.

The State Seal of Biliteracy takes the form of a seal that appears on the transcript or diploma of the graduating senior. It encourages students to pursue biliteracy, honors the skills our students attain, and can be evidence of skills that are attractive to future employers and college admissions offices.

This is the first year the program was implemented by the New Bedford Public Schools District. We proudly awarded the Seal of Biliteracy to six graduating students, two of which received the State Seal of Biliteracy with Distinction. The students honored with this achievement will have the Seal attached to their diplomas and a note of the award on their transcript.

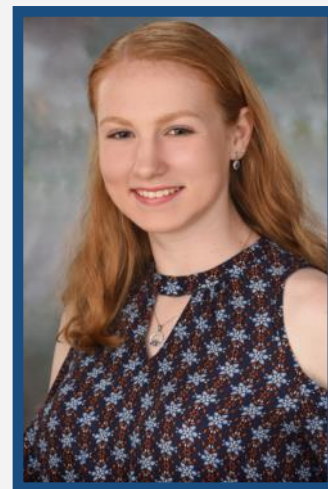
We proudly recognize the following graduates of the class of 2020 for receiving the Massachusetts State Seal of Biliteracy:



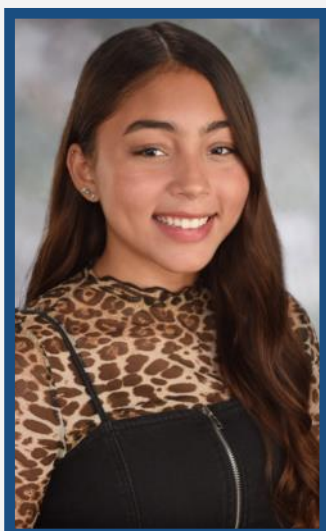
Esmeralda Barea Velez



Viviana Hernandez



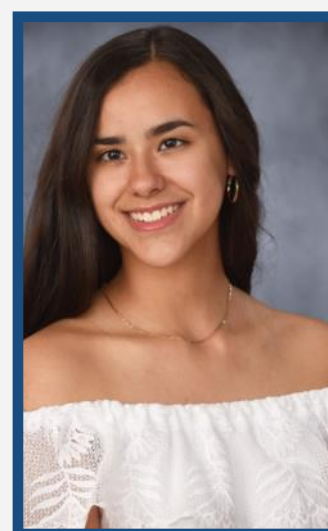
Claire Morck



Corelys Santiago-Cruz



Nayeli Tavarez



Yireliz Valentin

Teaching and Learning in 2020

Mathematics

The 2020 school year will bring on many exciting opportunities! Beginning this Fall, our three Middle Schools and ten Elementary Schools will be implementing Ready Classroom Mathematics as its core mathematics curriculum. This research-based program will help us restart learning after school closures by differentiating mathematics instruction based on our students' needs. It will also help our students re-connect through meaningful mathematics discussions. Below are some resources to help you start the year off right and prepare to get the most out of the program.



Watch the [Math Shouldn't Be Quiet](#) video to hear how the Ready Classroom Mathematics approach to instruction transformed their classrooms.

Read the [Getting to Know Ready Classroom Mathematics](#) resource for information on the essential components of instruction and where to start.

For more information on Ready Classroom Mathematics, including tips, tools, and resources, visit:

For Staff: <https://readyclassroomcentral.com/>

For Families: <https://readyclassroomcentral.com/familycenter/>

This is a learning process, and we are in this together!



NEW BEDFORD PUBLIC SCHOOLS
AND
LESLEY UNIVERSITY PRESENT

THE IMPACT OF TRAUMA ON LEARNING

The following courses comprise a certificate program in trauma & learning. Individual courses may also be taken for graduate level credit.

All courses for Fall of 2020 will be held virtually.

Course 1: An Overview

Dates: Tuesdays - 9/29, 10/6, 10/13, 10/27, 11/10

Time: 3pm-5pm



Course 2: Classroom and Student Supports

(Pre-Requisite Course 1)

Dates: Thursdays - 10/1, 10/15, 10/29, 11/12, 11/19

Time: 3pm-5pm



Course 3: Creating Trauma Sensitive Schools

(Pre-Requisite Course 2)

Dates: Thursdays - 10/1, 10/15, 10/29, 11/12, 11/19

Time: 4pm-6pm

Registration is limited to first 25 enrollees.

[CLICK HERE TO REGISTER](#)

Contact adougherty@newbedfordschools.org for more information

Some important information about the courses:

- All courses will be remote.
 - Cost is \$500 per course - 3 graduate credits through Lesley University - payment etc all through Lesley. (Questions about course reimbursement please refer to your contract).
 - Each course is capped at 25 students.
 - The courses are designed to be taken in succession, starting with course 1 and continuing on through course 4.
 - Many staff members have taken these courses with rave reviews - ask around I am sure you know someone who took it!
 - Please review your teachers or unit B contract as there are reimbursement pieces built into your contract for graduate courses and procedures on accessing it.
- Please note once the 25 slots are filled - we will start a waitlist in hopes of forming more courses as needed.

[HTCL Brochure](#)

*If you have any questions, please contact: Abbie Dougherty at adougherty@newbedfordschools.org or 508-997-4511 ext. 14154.